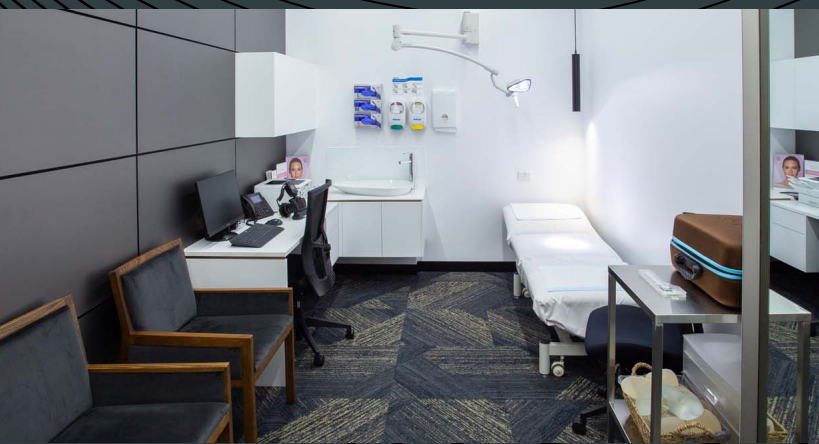


Introducing Brisbane's State-of-the-art Level 2 Day Hospital

Theatre
sessions
available
now



The East Brisbane Day Hospital (EBDH) is a premium medical facility certified as a Level 2 Day Hospital and located in inner-city Brisbane. Offering Session times in our state-of-the art operating theatres including a suite of the latest medical technology and spacious medical consulting and treatment rooms, EBDH is a modern, sophisticated hospital and treatment facility.

07 3397 1211
ebdh.com.au

→
EAST
BRISBANE
DAY HOSPITAL

sophisticated and functional

We are offering visiting surgeons high-quality theatre management, with a focus on ensuring service efficiencies through well-designed patient flows and quality systems and processes. Our theatre set-up particularly suits maxillofacial, gynaecological and plastic and reconstructive surgery, we can cater for many other surgical specialties.

Each operating theatre features an overhead array of articulated arms to provide:

- Twin LED (colour-switchable) theatre lights
- Two services panels with multiple power outlets, data outlets and oxygen, carbon dioxide, nitrous oxide, suction, medical air and tool air delivery outlets
- One flat-screen video monitor



For further information or to enquiry into booking, contact Alyce on 0415 364 366 or email alyce@glds.com.au

The EBDH is located less than two kilometres from the Brisbane CBD at 'The Wellington', 45 Wellington Road, East Brisbane.

